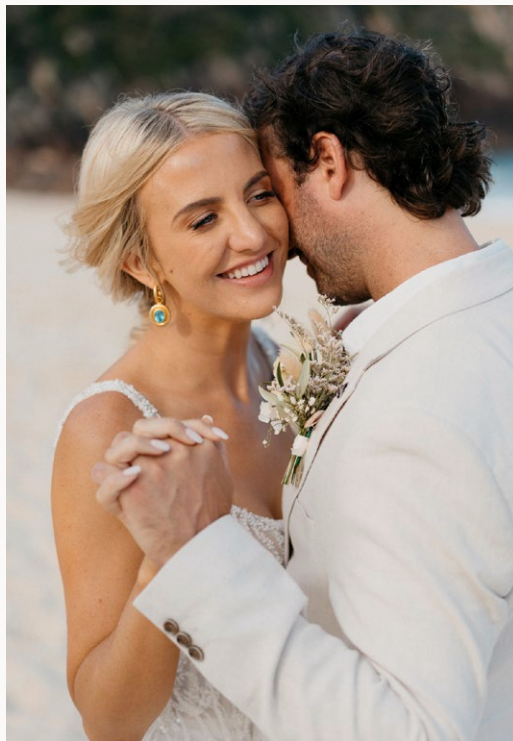


# WEDDINGS

AT SHOAL BAY COUNTRY CLUB





# Contents

WELCOME	02
VENUE INCLUSIONS	04
SPACES	05
DINING PACKAGES	09
SAMPLE MENUS	10
EXPERIENCE STATIONS	12
BEVERAGE PACKAGES	13
STYLING	20
TRANSPORT & ACCOMMODATION	21
NEXT STEPS	22
CONTACT US	23

The *perfect*  
destination for your  
*magical* seaside  
wedding.

The beginning of your forever.

Located on the shoreline of stunning Shoal Bay Beach, the picturesque enclave of Port Stephens, set against the perfect backdrop of crystal-clear waterways, the perfect destination for your magical seaside wedding.







## Venue Inclusions

### VENUE HIRE

For your reception

### ROOM SETUP

Including chairs, cutlery, crockery and glassware, linen napkins, complimentary standard table numbers and wishing well

### SERVICE

Dedicated Events Manager to assist with your wedding preparation  
On site operations manager for the event duration

### BASIC AUDIO VISUAL

SEATING CAPACITY		
SPACE	SEATED	COCKTAIL
Mermaids	N/A	150
Cane Lounge	N/A	80
Atmos	180	N/A

# Mermaids

Nestled against the stunning backdrop of Shoal Bay Beach, Mermaids has been recently renovated with a Mediterranean charm, making it an ideal setting for intimate and relaxed weddings. Offering an adjoining weatherproof alfresco area, featuring festoon lighting and pure waterfront views, Mermaids is the perfect space available to either partially or exclusively reserve for up to 150 guests.



**COCKTAIL**  
150 People



## Atmos

The perfect seaside setting to transport your intimate wedding or elopement to the Greek islands. Experience the magic of authentic Greek cuisine with our thoughtfully curated packages, designed for meaningful celebrations. With the support of our dedicated events team, your special day comes to life through traditional Greek flavours, sun-soaked Mediterranean charm, and a vibrant, unforgettable atmosphere.



**SEATED**  
180 People



## Cane Lounge

Say “cheers” amongst the bright and airy backdrop of the Cane Lounge, an idyllic location for casual social events of up to 80 guests.

Bifold doors lead out to the alfresco area, overlooking the beauty of Shoal Bay Beach, and the bar is only steps away.



**SEATED**  
45 People



**COCKTAIL**  
80 People

### CATERING OPTIONS

Canape packages (page 9)





**COCKTAIL**

\$165 per person

8-piece roving canapé package (including 2 substantial)

5-hour standard beverage package

Wedding cake cut, plated and served

Tea and coffee

.....

**ALTERNATE SERVE**

\$175 per person

Two-course alternate serve menu

5-hour standard beverage package

Wedding cake cut, plated and served

Tea and coffee





## SAMPLE MENUS

### SAMPLE MENUS - COCKTAIL

#### COLD

Port Stephens oysters, mignonette (gf)

Pistachio crusted crème cheese, watermelon, basil, balsamic (v)

Seeded mustard poached chicken tartlets

Vietnamese rice paper rolls, prawn, avocado and coriander (gf)

Salmon rilette en croute

Brie cheese, strawberry, tartufo (v)

#### HOT

Homemade chicken satay, peanut sauce (gf)

Manchego croquettes (v)

Sun dried tomato arancini (v)

Lobster spring rolls

Vegetarian spring rolls (v)

Gourmet lamb and rosemary mini pies

Tender crumbed chicken, ranch sauce

Crumbed jumbo prawns, lime aioli

#### SUBSTANTIAL

Angus beef sliders, American sauce

Pulled pork bao buns

Cheeseburger spring rolls

Beer battered fish bites

Italian meatballs, shaved parmesan cheese

Salt and pepper squid, lemon aioli

Upgrade to a 10 piece canapé package

(including 3 substantial canapés) for an additional \$15 per person.

## SAMPLE MENUS

### SAMPLE MENUS • ALTERNATE SERVE

#### ON THE TABLE

Sonoma bread with Pepe Saya butter

#### ENTREES (CHOOSE 2)

Crispy skin pork belly, celery, chive, citrus salad, apricot puree (gf)

Searred beef, mild smoked chili, charred broccolini (gf)

Searred scallop, pickled ginger and cucumber salad, yuzu dressing, tobiko

Moroccan cauliflower salad, tzatziki, falafel (v, gf)

Hot smoked salmon mousse tartlet, cherry tomato, aged balsamic, herb salad

Chilled prawns, cucumber yoghurt puree, watercress, herb oil (gf)

#### MAIN COURSE (CHOOSE 2)

Grilled chicken breast, charred vegetables, romesco

Beef tenderloin, mash potato, roast eschalot jus (gf)

Wild mushroom risotto, shaved parmesan cheese, truffle (v)

Roast lamb rump, mushroom-walnut ragout, broccolini, rosemary jus (gf)

Pan roasted barramundi fillet, fava puree, green beans, dukkah, caper butter (gf)

Crispy skin salmon fillet, yuzu, edamame puree, pickled radish (gf)

#### DESSERT (CHOOSE 2)

Lemon curd tartlet (v)

Yiayia's Baklava (v)

Eton mess, fresh berries (v, gf)

Chocolate ganache tartlet (v)

Caramel crème pot, chocolate ganache, popcorn, praline (v)

Upgrade to 3 courses for an additional \$10 per person.



# Add a special something *extra* to your day.

## OYSTER STATION • 25PP

Freshly shucked and locally sourced oysters accompanied by house made condiments and lemon cheeks.

.....

## SEAFOOD ON ICE • 40PP

Feast on an ocean fare of fresh local prawns, oysters and balmain bugs.

.....

## PAELLA • 28PP

### SEAFOOD & CHORIZO OR CHICKEN & CHORIZO

Let our chefs treat you to a traditional paella with fresh seafood or chicken and chorizo.

.....

## GRAZING STATION • 35PP

Assorted cured meats and imported cheese, accompanied by fresh artisanal baked bread, crispy lavosh, chargrilled and marinated vegetables, fava dip, hummus, tomato relish, pickles, homemade marinated olives.

.....

## SLIDER STATION • 18PP

Mini angus beef sliders served in milk buns with American sauce, pickles and cheese.

.....

## DESSERT STATION • 18PP

Selection of chefs home made decadent cakes, slices and mini sweets.





Say *cheers* with a range  
of *beverage options*  
for your guests.

We offer a range of beverage packages with curated wine lists and tailored offerings designed to enhance your wedding celebration, including upgrades and unique add ons to wow your guests.

## BEVERAGE PACKAGES

### STANDARD BEVERAGE PACKAGE

#### BUBBLES

Chain of Fire Sparkling Cuvée NV, Central Ranges, NSW

#### WHITE WINE

Chain of Fire Semillon Sauvignon Blanc, Central Ranges, NSW

#### RED WINE

Chain of Fire Shiraz Cabernet, Central Ranges, NSW

#### OTHER

Local Tap Beers

Soft Drinks and Juice





## BEVERAGE PACKAGES

### PREMIUM BEVERAGE PACKAGE

+\$15 per person

#### BUBBLES

Bandini Prosecco DOC, Veneto, Italy

#### WHITE WINE (CHOOSE 1)

Pikorua Sauvignon Blanc, Marlborough, NZ

Chain of Fire Semillon Sauvignon Blanc, Central Ranges, NSW

Ara Single Estate Pinot Gris, Marlborough, NZ

Montrose Chardonnay, Mudgee, NSW

#### RED WINE (CHOOSE 1)

Josef Chromy 'Pepik' Pinot Noir, Relbia, TAS

Chain of Fire Shiraz Cabernet, Central Ranges, NSW

Rymill 'The Yearling' Cabernet Sauvignon, Coonawarra, SA

Hancock & Hancock Shiraz, McLaren Vale, SA

#### PREMIUM BOTTLED BEERS

Peroni

Corona

Asahi

#### OTHER

Local Tap Beers

Soft Drinks and Juice

## BEVERAGE PACKAGES

### DELUXE BEVERAGE PACKAGE

+\$25 per person

#### BUBBLES

Wicks Estate Sparkling, Adelaide Hills, SA

#### WHITE WINE (CHOOSE 2)

Audrey Wilkinson Semillon, Hunter Valley, NSW

Catalina Sounds Sav Blanc, Malbrough, NZ

Tar & Roses Pinot Grigio, King Valley, VIC

Chapel Hill 'Abacus' Chardonnay, McLaren Vale, SA

#### ROSÉ WINE (CHOOSE 1)

Luna Rosa Rosado, Central Ranges, NSW

Ara Single Estate Rosé, Marlborough, NZ

#### RED WINE (CHOOSE 2)

Giant Steps Shiraz Pinot Noir, Yarra Valley, VIC

Quilty & Graden Merlot, Orange, NSW

Villen and Vixen Shiraz, Barossa Valley, SA

#### PREMIUM BOTTLED BEERS

Peroni • Corona • Asahi

#### OTHER

Local Tap Beers

Soft Drinks and Juice





## Beverage *upgrades* to *wow* your guests.

### UPGRADE TO SPIRITS

4 hours: +\$28 per person

5 hours: +\$38 per person

Eristoff Vodka

Bombay Dry Gin

Dewars White Label Scotch

Jim Beam Bourbon

Bundaberg Rum

Bacardi Carta Blanca Rum

### VEUVE CLICQUOT

Add a glass of Veuve Clicquot on arrival  
or with speeches for \$22 per glass.

## Celebrate in *style* with our beverage *experience* stations.

### HIS & HER COCKTAIL STATION

\$300 set up fee for one hour service on arrival including cocktail bar set up, bartender, choice of two cocktails from our cocktail list, bar signage, styling and garnish.

Pricing is per cocktail and available on request.  
Minimum 60 cocktails.

.....

### GIN & TONIC STATION

\$300 set up fee for one hour service on arrival including bar set up, bartender, bar styling and garnish.

Additional \$12 per person and includes two gins  
and two mixers of your choice.

.....

### VODKA & MIXER STATION

\$300 set up fee for one hour service on arrival including bar set up, bartender, bar styling and garnish.

Additional \$12 per person and includes two vodkas  
and two mixers of your choice.





Get the party *started*  
with champagne or  
cocktail *towers*.

**CHAMPAGNE TOWER**

Four-tiered champagne tower  
including plinths and 30 coupe glasses.

Price from \$350, including six bottles of sparkling wine.

.....

**COCKTAIL TOWER**

Four-tiered cocktail tower  
including plinths and 30 glasses

Price quoted on application.

# Styling elements to *elevate* your perfect day.

From table styling to candlelit backdrops,  
our in-house styling team will work with you  
to design the wedding of your dreams.



## Getting here *and* staying in *style*.

### TRANSPORT

Shoal Bay Country Club is an easy two-and-a-half-hour drive north of Sydney, and just 30 minutes from Newcastle airport, which accommodates regular flights from cities including Melbourne, Brisbane, Gold Coast, Canberra and Sydney.

### ACCOMMODATION

Shoal Bay Country Club offers various on-site accommodation options suitable for you, your bridal party and guests. From our luxury penthouse with sweeping ocean views to holiday houses and apartments, there's a perfect accommodation option for everyone.

[SEE MAP](#)



# The *next steps* to your *dream* wedding.



02

## BOOK A SITE VISIT

Book a time to come and explore our venue and answer any questions you may have. Virtual site inspections are also available.



04

## THE EXTRA MOMENTS

Complete your wedding vision with bookings for rehearsal dinners, on-site accommodation, and styling options.



06

## TIME TO SAY 'I DO'

Arrive in Shoal Bay to start the celebration of a lifetime. Relax while our team looks after you through every step of your celebrations.

01

## GET IN TOUCH

Enquire with us via phone, email or our website and our team will be in contact with you.



03

## LOCK IN YOUR DATE

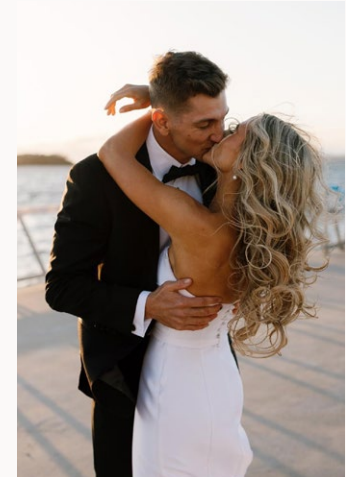
Confirm the date for your special day and your dedicated coordinator will guide you through your next steps



05

## THE LEAD UP

Meet with your wedding coordinator to finalise all your last details prior to your big day.





Get in touch with our  
*team* to start planning  
your *perfect* day.

Phone: (02) 4981 1555

Email: [functions@sbcc.com.au](mailto:functions@sbcc.com.au)

35-45 Shoal Bay Road, Shoal Bay NSW 2315

ENQUIRE